

WIKINGER

HLD IDENTIFICATION
WK OSS

ICAO IDENTIFIER
EDYW

OSS SIDE IDENTIFICATION
WKOSS

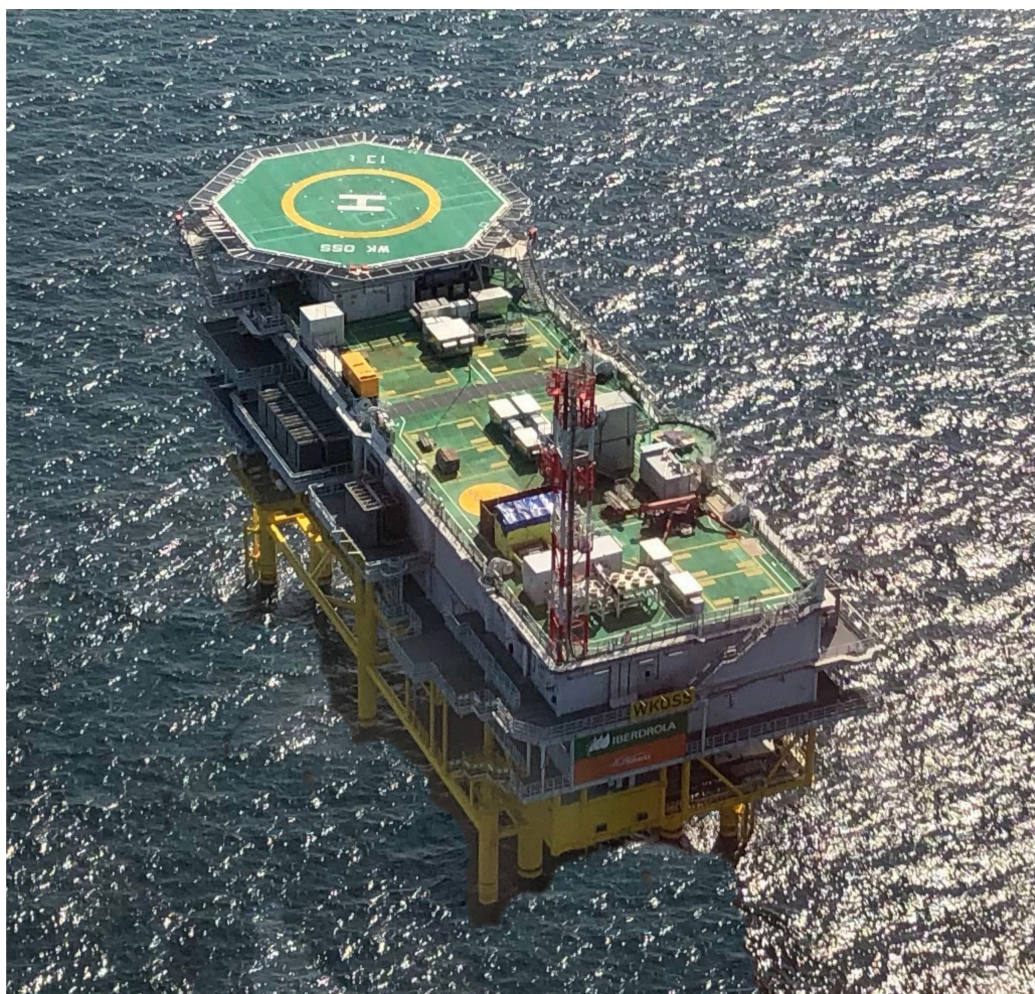
**FIXED NORMALLY UNATTENDED INSTALLATION
IBERDROLA RENOVABLES OFFSHORE DEUTSCHLAND GMBH**

HLD REFERENCE POINT

N 54°50.06'

E 014° 04.46'

BREMEN INFORMATION 128.525 MHz		MCO WIKINGER 146.090 MHz	
WEATHER INFORMATION 131.705 MHz 5 SEC		LIGHTING & DIMMING 131.705 MHz 3x 100% 5x 30% (10%) 7x 10% (3%)	
HELIDECK HEIGHT 115 ft MSL	D-VALUE 23.5 m	MTOW 13.0 t	
APPROACH / DEPARTURE CORRIDOR 077° / 257° DECK HEADING 167°			
HIGHEST OBSTACLE ON INSTALLATION 69 ft ABOVE HLD (ANTENNA MAST)		HIGHEST OBSTACLE IN THE VICINITY 544 ft MSL (WTG)	
REFUELLING FACILITY N/A	GROUND POWER UNIT YES	LANDING NET N/A	STATUS LIGHT N/A
FIRE FIGHTING FACILITIES			
DIFFS AUTO + MAN + REMOTE ACTIVATION	2x HYDRANT FLEXIBLE HOSES (30 m)	2x 10 kg CO₂	2x 25 kg DRY POWDER



WIKINGER

HLD IDENTIFICATION
WK OSS

ICAO IDENTIFIER
EDYW

OSS SIDE IDENTIFICATION
WKOSS

FIXED NORMALLY UNATTENDED INSTALLATION
IBERDROLA RENOVABLES OFFSHORE DEUTSCHLAND GMBH

HLD REFERENCE POINT

N 54°50.06'

E 014° 04.46'

BREMEN INFORMATION 128.525 MHz		MCO WIKINGER 146.090 MHz	
WEATHER INFORMATION 131.705 MHz 5 SEC		LIGHTING & DIMMING 131.705 MHz 3x 100% 5x 30% (10%) 7x 10% (3%)	
HELIDECK HEIGHT 115 ft MSL	D-VALUE 23.5 m	MTOW 13.0 t	
APPROACH / DEPARTURE CORRIDOR 077° / 257° DECK HEADING 167°			
HIGHEST OBSTACLE ON INSTALLATION 69 ft ABOVE HLD (ANTENNA MAST)		HIGHEST OBSTACLE IN THE VICINITY 544 ft MSL (WTG)	
REFUELLING FACILITY N/A	GROUND POWER UNIT YES	LANDING NET N/A	STATUS LIGHT N/A
FIRE FIGHTING FACILITIES			
DIFFS AUTO + MAN + REMOTE ACTIVATION	2x HYDRANT FLEXIBLE HOSES (30 m)	2x 10 kg CO₂	2x 25 kg DRY POWDER
NON - COMPLIANCES • NIL		LIMITATIONS • TEMPORARILY VFR DAY ONLY	

REMARKS

- CONTACT MARINE COORDINATION / HLO PRIOR TO ENTERING OWF AND FOR FURTHER CLEARANCES
- BE AWARE OF WTG IN CLOSE PROXIMITY TO HELIDECK

WIKINGER

HLD IDENTIFICATION
WK OSS

ICAO IDENTIFIER
EDYW

OSS SIDE IDENTIFICATION
WKOSS

FIXED NORMALLY UNATTENDED INSTALLATION
IBERDROLA RENOVABLES OFFSHORE DEUTSCHLAND GMBH

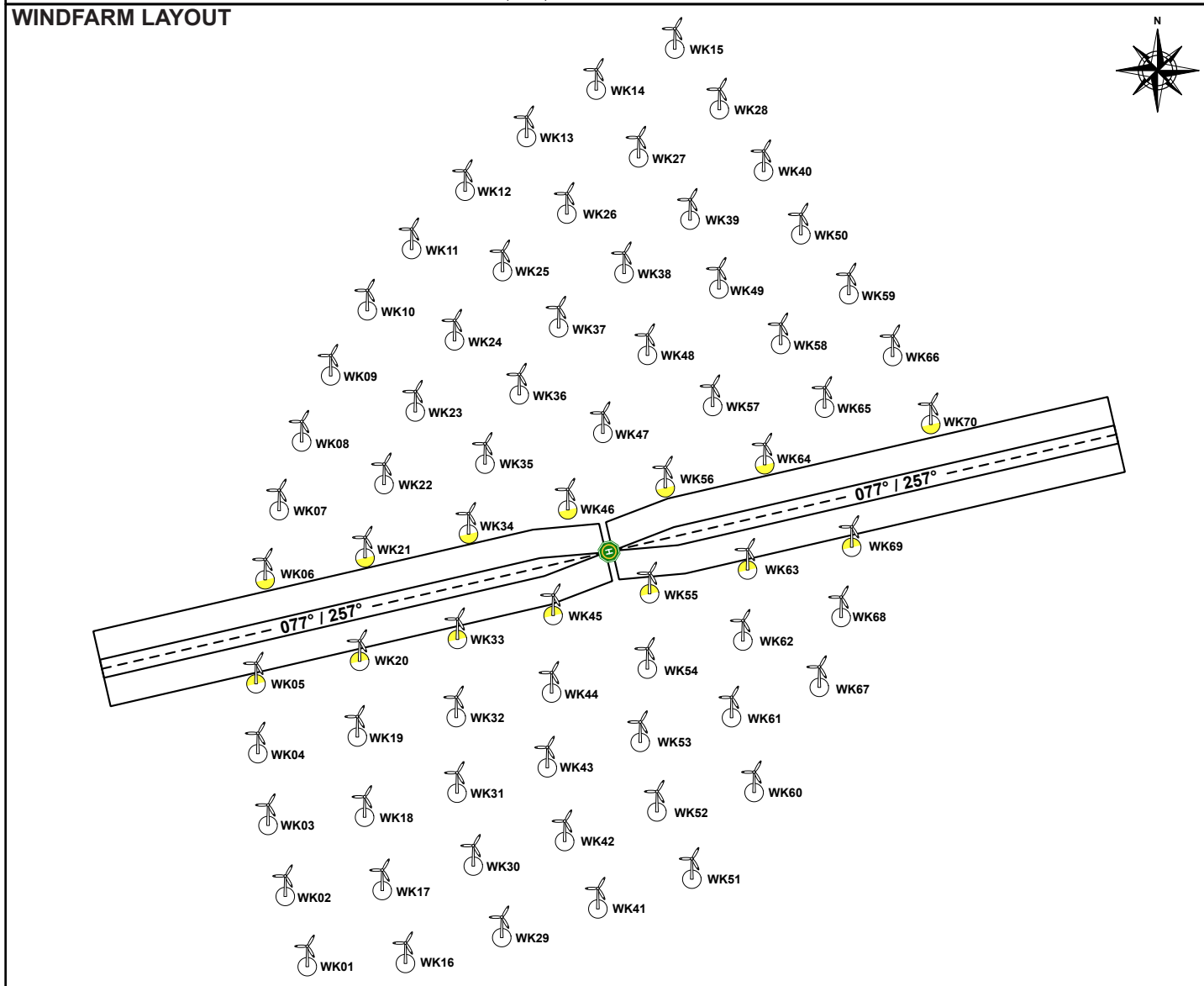
HLD REFERENCE POINT

N 54°50.06'

E 014° 04.46'

BREMEN INFORMATION 128.525 MHz		MCO WIKINGER 146.090 MHz	
WEATHER INFORMATION 131.705 MHz 5 SEC		LIGHTING & DIMMING 131.705 MHz 3x 100% 5x 30% (10%) 7x 10% (3%)	
HELIDECK HEIGHT 115 ft MSL	D-VALUE 23.5 m	MTOW 13.0 t	
APPROACH / DEPARTURE CORRIDOR 077° / 257° DECK HEADING 167°			
HIGHEST OBSTACLE ON INSTALLATION 69 ft ABOVE HLD (ANTENNA MAST)		HIGHEST OBSTACLE IN THE VICINITY 544 ft MSL (WTG)	
REFUELLING FACILITY N/A	GROUND POWER UNIT YES	LANDING NET N/A	STATUS LIGHT N/A

FIRE FIGHTING FACILITIES			
DIFFS AUTO + MAN + REMOTE ACTIVATION	2x HYDRANT FLEXIBLE HOSES (30 m)	2x 10 kg CO₂	2x 25 kg DRY POWDER



WIKINGER

HLD IDENTIFICATION
WK OSS

ICAO IDENTIFIER
EDYW

OSS SIDE IDENTIFICATION
WKOSS

FIXED NORMALLY UNATTENDED INSTALLATION
IBERDROLA RENOVABLES OFFSHORE DEUTSCHLAND GMBH

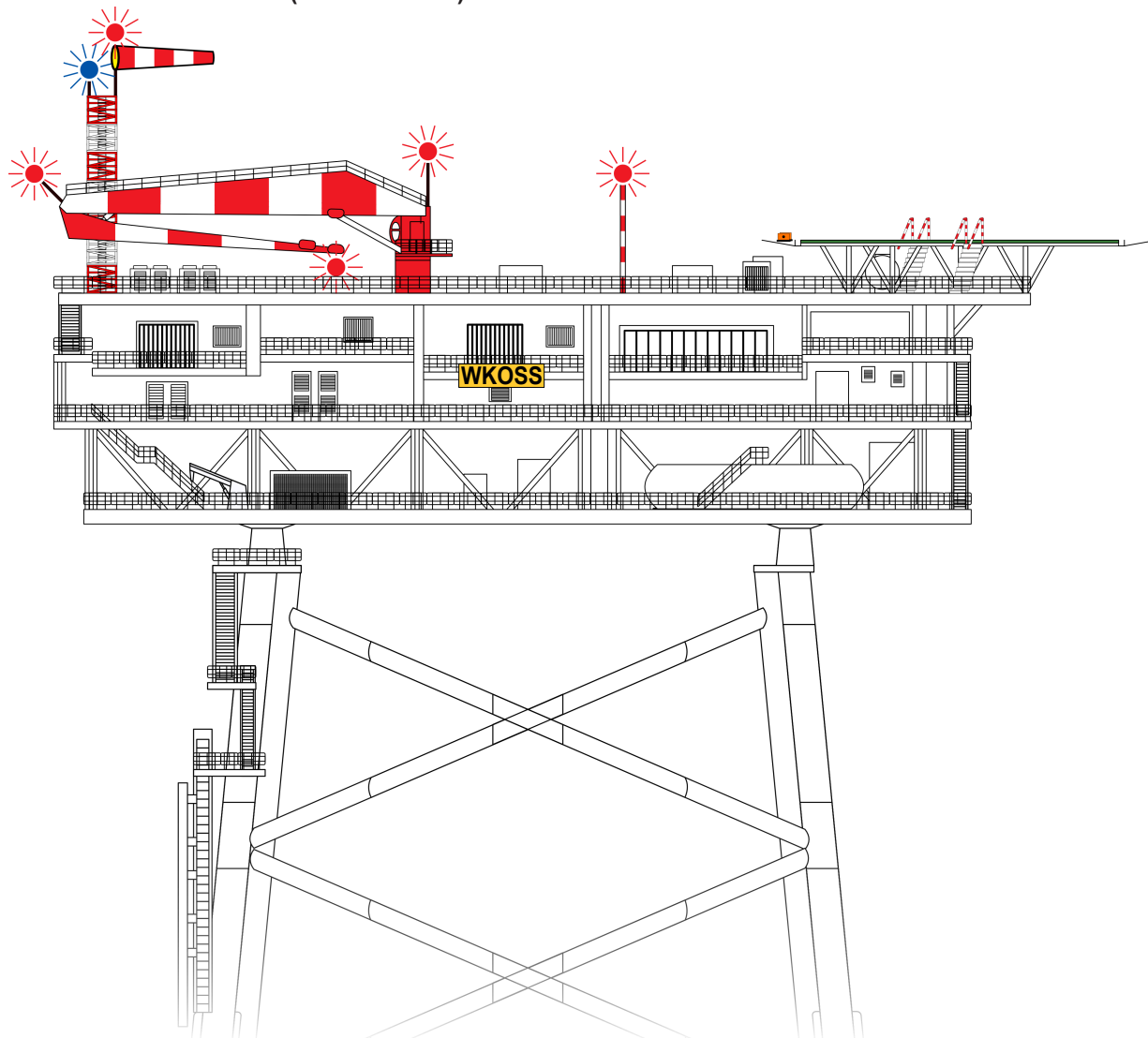
HLD REFERENCE POINT

N 54°50.06'

E 014° 04.46'

BREMEN INFORMATION 128.525 MHz		MCO WIKINGER 146.090 MHz	
WEATHER INFORMATION 131.705 MHz 5 SEC		LIGHTING & DIMMING 131.705 MHz 3x 100% 5x 30% (10%) 7x 10% (3%)	
HELIDECK HEIGHT 115 ft MSL	D-VALUE 23.5 m	MTOW 13.0 t	
APPROACH / DEPARTURE CORRIDOR 077° / 257° DECK HEADING 167°			
HIGHEST OBSTACLE ON INSTALLATION 69 ft ABOVE HLD (ANTENNA MAST)		HIGHEST OBSTACLE IN THE VICINITY 544 ft MSL (WTG)	
REFUELLING FACILITY N/A	GROUND POWER UNIT YES	LANDING NET N/A	STATUS LIGHT N/A
FIRE FIGHTING FACILITIES			
DIFFS AUTO + MAN + REMOTE ACTIVATION	2x HYDRANT FLEXIBLE HOSES (30 m)	2x 10 kg CO₂	2x 25 kg DRY POWDER

INSTALLATION PROFILE VIEW (SOUTHWEST)



WIKINGER

HLD IDENTIFICATION
WK OSS

ICAO IDENTIFIER
EDYW

OSS SIDE IDENTIFICATION
WKOSS

FIXED NORMALLY UNATTENDED INSTALLATION
IBERDROLA RENOVABLES OFFSHORE DEUTSCHLAND GMBH

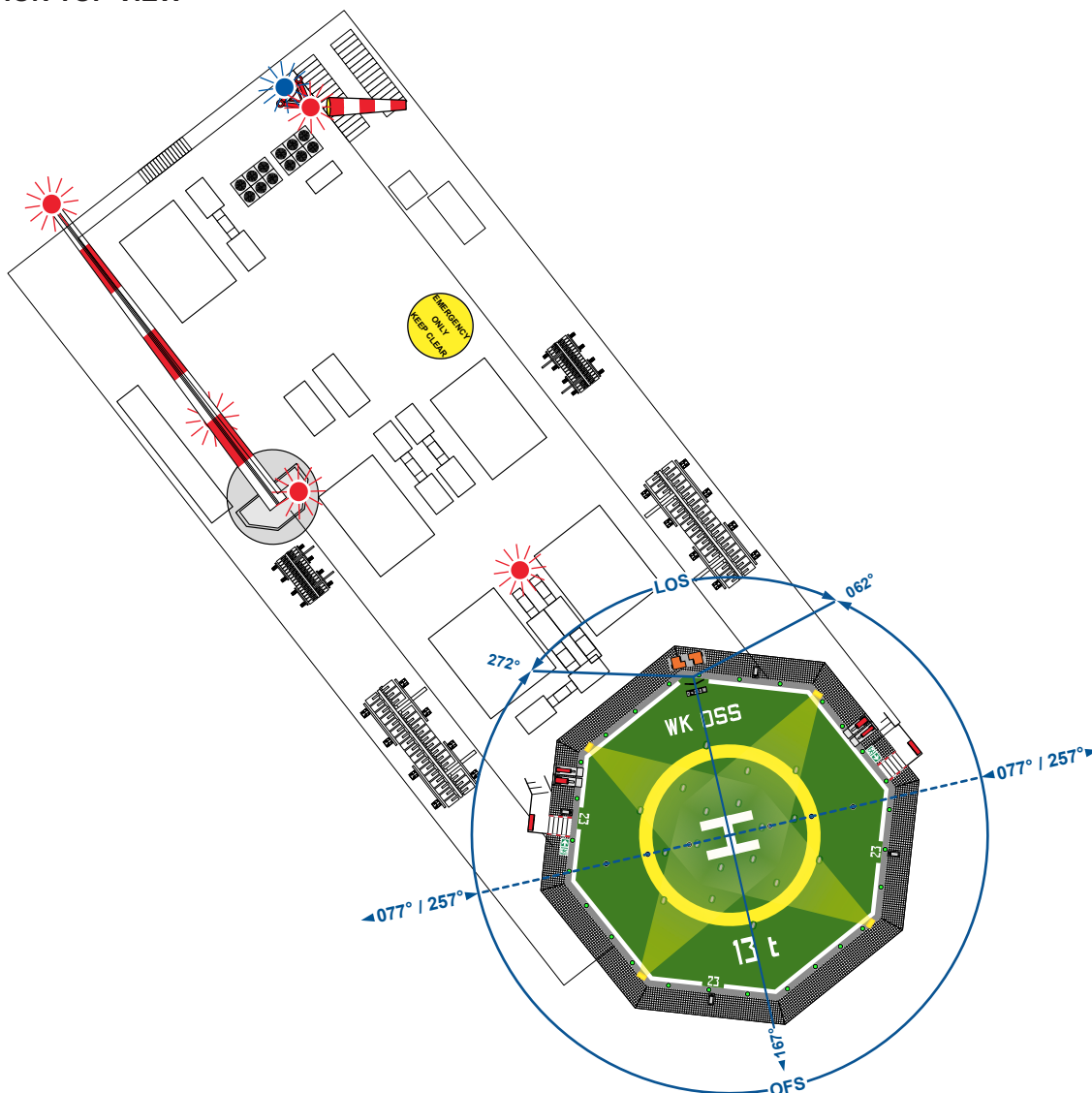
HLD REFERENCE POINT

N 54°50.06'

E 014° 04.46'

BREMEN INFORMATION 128.525 MHz		MCO WIKINGER 146.090 MHz	
WEATHER INFORMATION 131.705 MHz 5 SEC		131.705 MHz 3x 100% 5x 30% (10%) 7x 10% (3%)	
HELIDECK HEIGHT 115 ft MSL	D-VALUE 23.5 m	MTOW 13.0 t	
APPROACH / DEPARTURE CORRIDOR 077° / 257° DECK HEADING 167°			
HIGHEST OBSTACLE ON INSTALLATION 69 ft ABOVE HLD (ANTENNA MAST)		HIGHEST OBSTACLE IN THE VICINITY 544 ft MSL (WTG)	
REFUELLING FACILITY N/A	GROUND POWER UNIT YES	LANDING NET N/A	STATUS LIGHT N/A
FIRE FIGHTING FACILITIES			
DIFFS AUTO + MAN + REMOTE ACTIVATION	2x HYDRANT FLEXIBLE HOSES (30 m)	2x 10 kg CO₂	2x 25 kg DRY POWDER

INSTALLATION TOP VIEW



WIKINGER DEPARTURE WIK EE

HLD IDENTIFICATION
WIK OSS

ICAO IDENTIFIER
EDYW

OSS SIDE IDENTIFICATION
WKOSS

EXIT POINT WIK EE

N 54° 50.57'

E 014° 08.35'

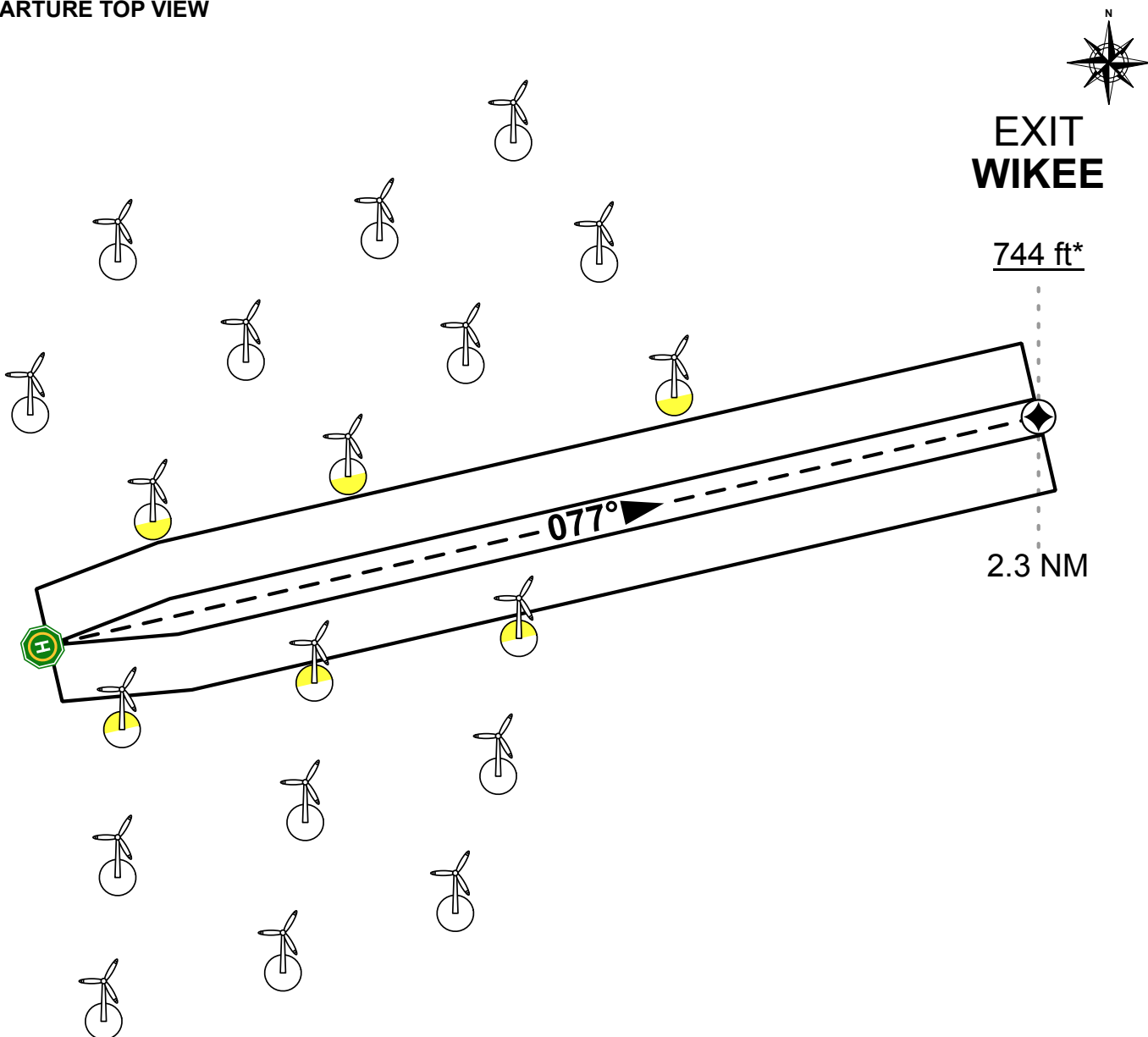
DEPARTURE DIRECTION

077°

DEPARTURE PROCEDURE

- DEPART ON TRACK 077°
- OBSTACLE-FREE WHEN WITHIN DEPARTURE CORRIDOR
- ABOVE WTG HEIGHT WHEN PASSING 544 ft MSL
- CORRIDOR DESIGNED TO REACH 200 ft ABOVE WTG HEIGHT AT EXIT POINT WIK EE (4.5% CLIMB RATE)

DEPARTURE TOP VIEW



*200 ft above WTG

ALL COURSES TRUE

VAR 4.3° E (2018)

WIKINGER DEPARTURE WIK EW

HLD IDENTIFICATION
WIK OSS

ICAO IDENTIFIER
EDYW

OSS SIDE IDENTIFICATION
WKOSS

EXIT POINT WIKEW

N 54° 49.56'

E 014° 00.56'

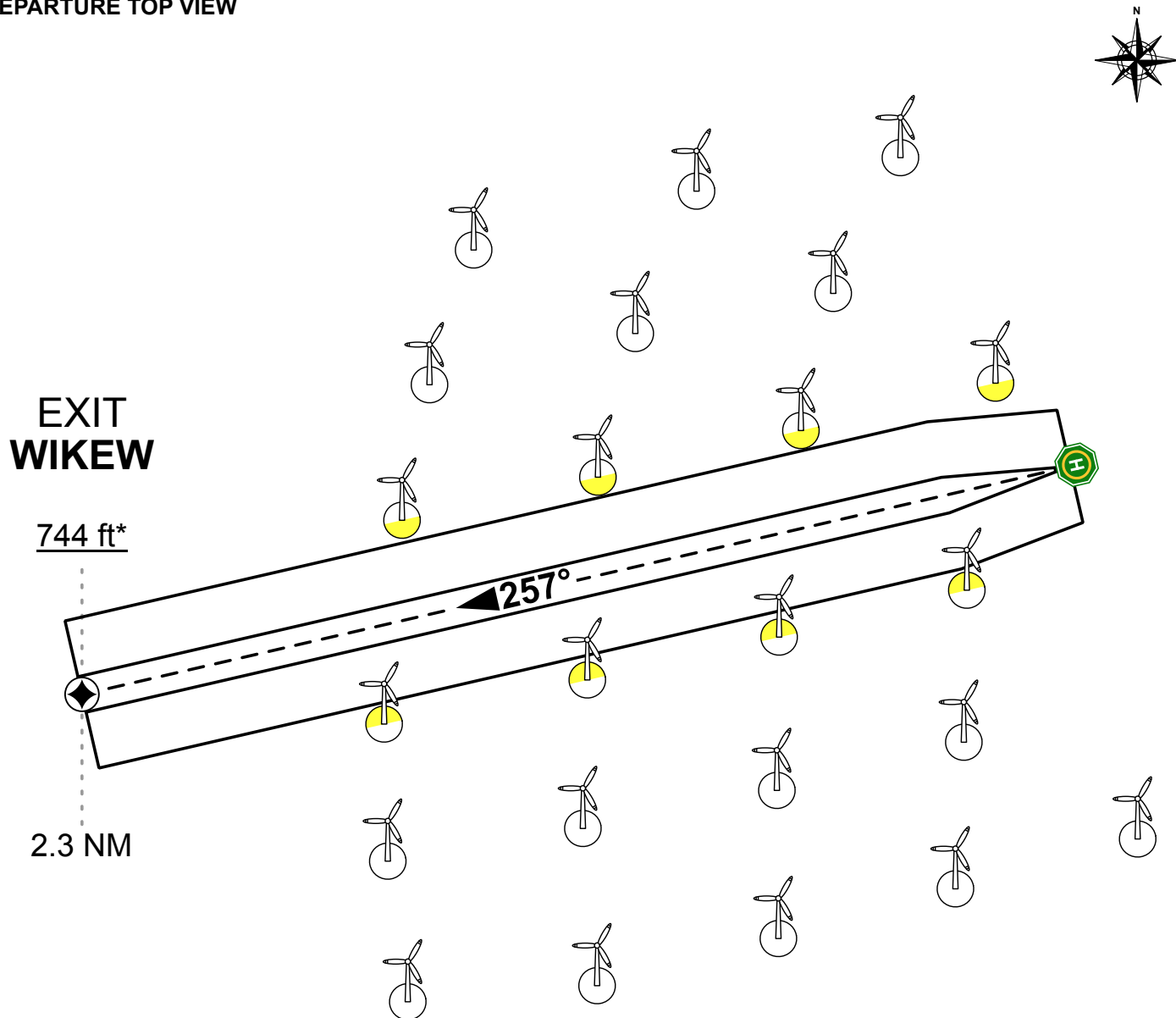
DEPARTURE DIRECTION

257°

DEPARTURE PROCEDURE

- DEPART ON TRACK 257°
- OBSTACLE-FREE WHEN WITHIN DEPARTURE CORRIDOR
- ABOVE WTG HEIGHT WHEN PASSING 544 ft MSL
- CORRIDOR DESIGNED TO REACH 200 ft ABOVE WTG HEIGHT AT EXIT POINT WIKEW (4.5% CLIMB RATE)

DEPARTURE TOP VIEW



**EXIT
WIKEW**

744 ft*

2.3 NM

257°

*200 ft above WTG